

DMS 365

Dealer Management System

„We have been a customer since the very beginning. Our partnership has grown a lot and we are currently using the complete product world: Sales, Rent, Service etc. Even if ERP projects are no easy feat, all in all we've been able to overcome every difficulty & are a good team.“

**Tom Grotemeier,
Heinrich Grotemeier GmbH & Co. KG**

TRASER DMS 365

Administration Interface for agricultural machinery dealers and construction machinery dealers

As a fully integrated ERP solution specifically designed for the trading of machines, TRASER DMS 365 provides a complete ERP solution including General Ledger management. TRASER DMS 365 connects all trade processes and ensures clear structures, precise communication, and optimized processes. Catered specifically to the needs of your company, it meets all the daily requirements of the machine trade industry.

Practical and tailored to fit the daily requirements of the machinery trade.



Check it out

Try out our 30-day trial version for free.



<https://traser-software.de/en/products/dms-365>

General Functionalities

- Automatic charges & discounts (e.g. freight)
- Simple file & image integration in master & transaction data
- Item/Service Item Attributes (machines) incl. filtering options
- Rebook Wizard for Current Assets / Fixed Assets
- Management of Service Item Components

Purchase & Sale

- Quote & Order Processing for Sales
- Order Processing for Purchases
- Purchase & Sales History
- Global Item Search via Catalog & Item Master Data
- Connection of Purchase & Sale for Replenishment Orders
- Shopping Cart functionality for the import / export of vendor files
- Extended Price & Discount Management

Inventory & Spare Parts

- Location & Bin Management
- Catalog Management & Import
- Setup of Surcharge Rates for Catalogs in Purchase & Sale
- Substitution & Interchangeable Items
- Automatic processing of Warehouse Documents for picking & put-away
- Simple Replenishment Management
- Definition of Warehouse Data for the Management of Reorders/ Replacements
- Barcode Management

Machine Trade

- Trade Number Management for Machine Life Cycles
- Machine Sales via Sales Forecast incl. Calculation Forecast
- Configuration import (depending on manufacturer) & configuration lists
- Processing of Trade-Ins (customer & vendor)
- Summary of bookings for a machine in a Calculation Review
- Business processes with machine communities
- Revenue and Contribution Margin Commission

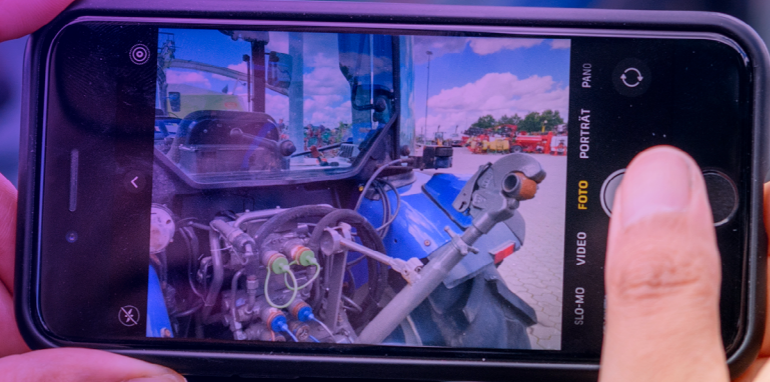
Service

- Processing of Service Quotes & Service Orders
- Documentation of Services in Worksheets
- Standard Service Codes (e.g. for Maintenance Packages)
- Management & Notification of Service Intervals
- Warranty & Warranty Claim Management
- Summation of Labor Costs for Document Printouts
- Fixed Prices for invoicing of Orders
- Processing of Checklists on Service Orders
- Administration of internal Labor Costs
- Service Order Splitting

TRASER DMS 365

Mobile Service 365

Mobile editing & documentation of service orders. Completely integrated workflow with photos, signatures, time recording and all the information you need at your fingertips at any time.



Check it out

Google Play and the Google Play logo are trademarks of Google LLC. App Store and the Apple logo are trademarks of Apple Inc.



<https://traser-software.de/en/products/dms-365/mobile-service-365>

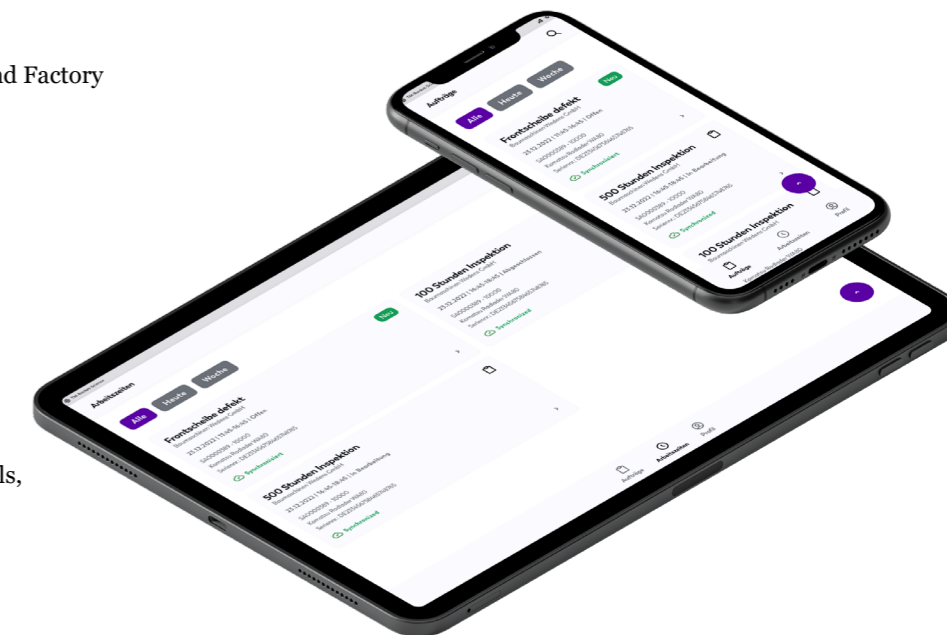
A link between your sales representative and your branch

Mobile Service 365 – Functionalities

- Technician's overview of planned Service Orders
- Adding Spare Parts
- Image capture and editing
- Capture of signature/s
- Checklist editing
- View machine data
- Scanning and searching for Spare Parts
- Creation of a new worksheet
- Time tracking (Personnel Time Recording and Factory Data Capture (FDC))
- Handling Service Vehicles
- Repair Status handling
- GPS tracking (optional activable)
- Service Item Equipment
- Standard Service Codes
- Trip mileage tracking
- Push notifications
- Online & offline capability
- Intergration of several other apps (phone calls, navigation etc.)

Neue Funktionen:

- View history of customer and machine
- Service Intervals
- Capturing „consumables“



TRASER Mobile Service 365